

C-Circulation

Control Bleeding:

- Direct Pressure
- Elevation
- Hemostatic Dressing
- Tourniquet if needed

Direct pressure
& elevation



Use a tourniquet ONLY AS A
LAST RESORT, if bleeding
cannot be stopped and the
situation is life-threatening



#ADAM

Apply tourniquet
if needed

S-Shock

If possible, lay the person flat and bend uninjured legs. Cover to keep warm. Stay calm.

S-Spinal Motion Restriction

Head and neck injuries should be suspected in all crashes.

Assist the person by telling them what you are doing and then support the head and neck.

Do not
cover ears.

Do not
apply traction.



Name _____

Phone # of significant other

Signs/Symptoms –Where do you hurt?

Allergies _____

Medications _____

Past Medical Problems _____

Last Food/Drink _____

Events leading up to crash _____

Witnesses –Name & Phone #



P.O. Box 40
Big Bend, WI 53103
(262) 706-3278

Prevent Further Injury
Assess the Situation
Contact the EMS
Treat Injuries

ABCSS of Trauma™
RoadGuardians.org

Prevent Further Injury

Move vehicles completely off the road

Make yourself & the site visible

Get Trauma Kit

Leave 100 ft. perimeter for EMS



Essential Supplies

Assess the Situation

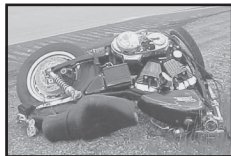
of vehicles involved

injured people/pets

Suspected Injuries

Speed

Safety Equipment



Contact the EMS

Dial 911

If no signal available try text to 911.

Give the following info:

- Location
- # injured
- # vehicles
- possible injuries

Stay on the line until dismissed by the dispatcher.

Treat Injuries using ABCSS of Trauma™

A—Airway

Open the airway using the Jaw Thrust maneuver and assess breathing. Look, listen and feel for breathing.

Remove helmet only if it interferes with breathing



B—Breathing

If no breathing detected: Give two initial breaths and then give **one breath every 6 seconds.**